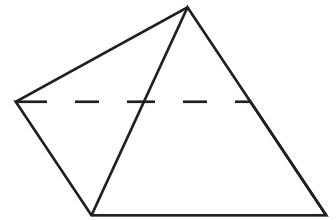
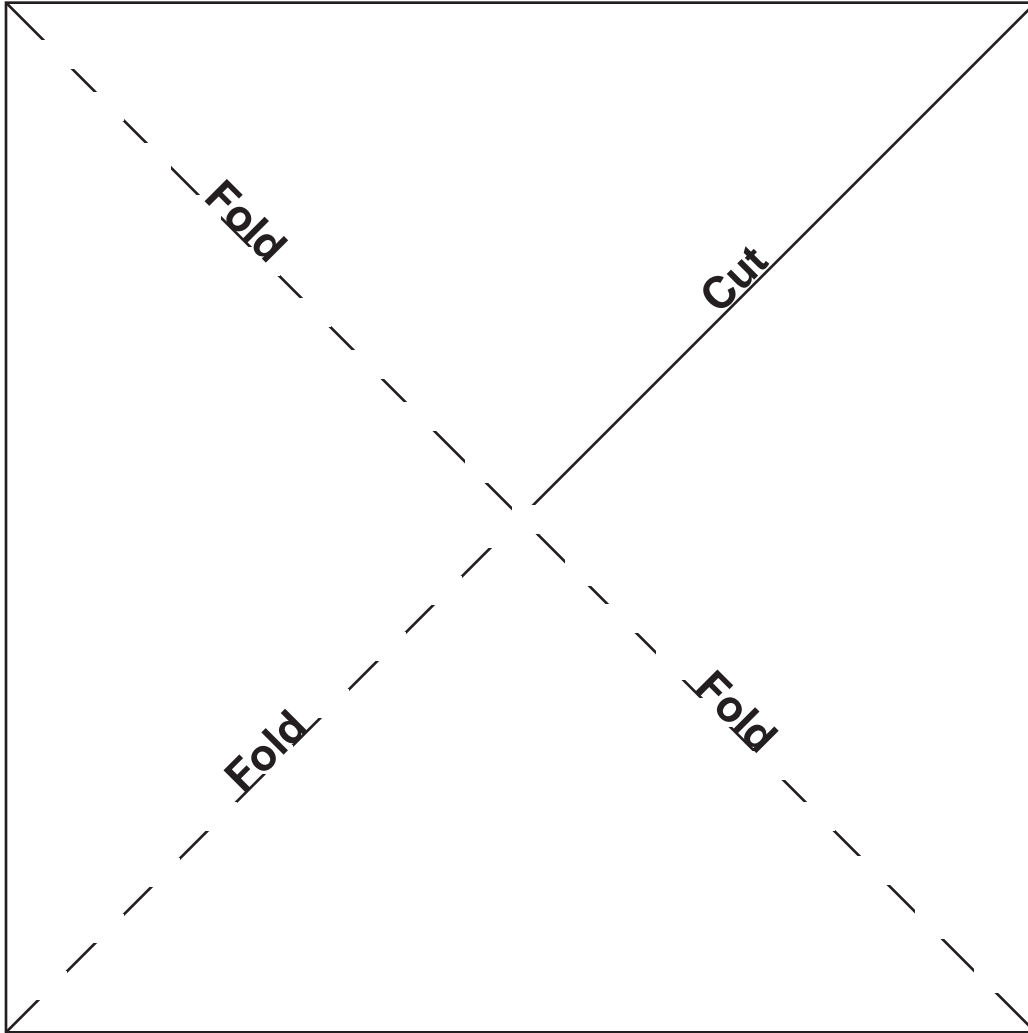


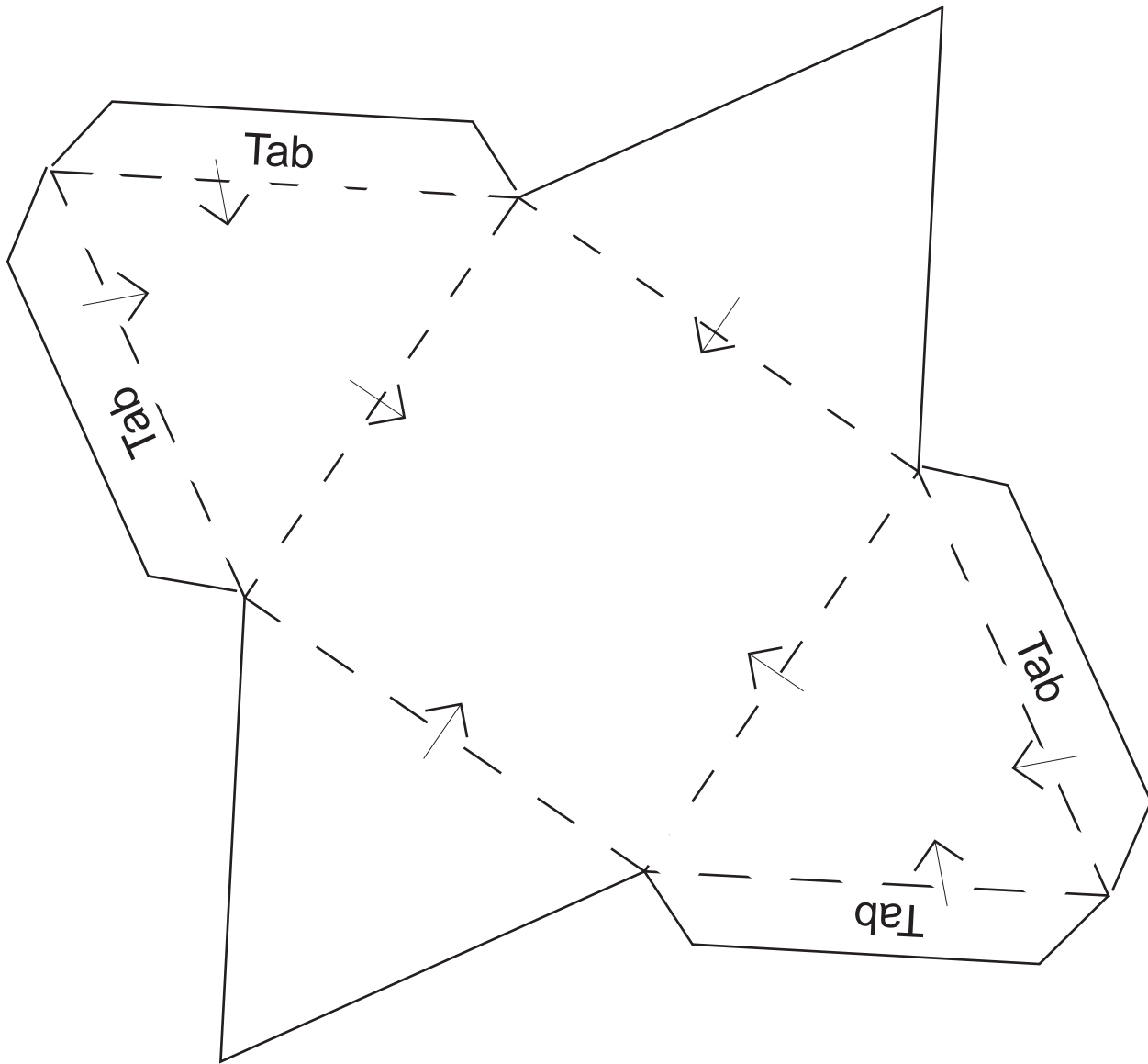
Geometric Forms:  
**Three-sided Pyramid**



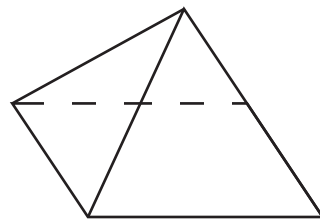
1. Cut out a square
2. Fold diagonally.
3. Unfold and fold diagonally the other way.
4. Cut from one corner to center.
5. Pull the two sides together so they overlap.
6. Glue between overlapping sides.
7. For a bottom, trace the base on paper. Add tabs.
8. Cut out your shape.
9. Bend in tabs and insert inside pyramid. Tape or glue shut

## Geometric Forms

# Four-sided Pyramid

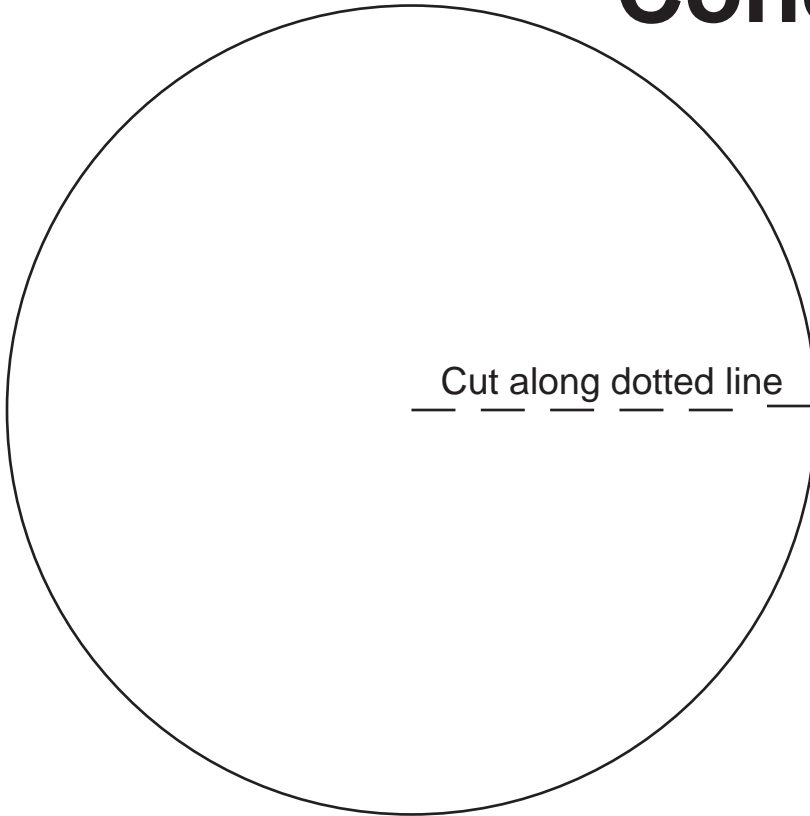


1. Cut out figure along solid lines.
2. Fold along all dotted lines.
3. Bring the pyramid together
4. Glue or tape the tabs to the pyramid.

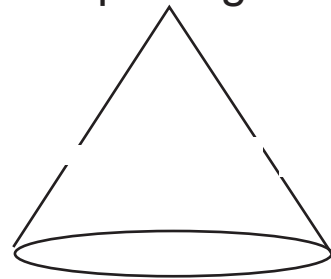


## Geometric Forms:

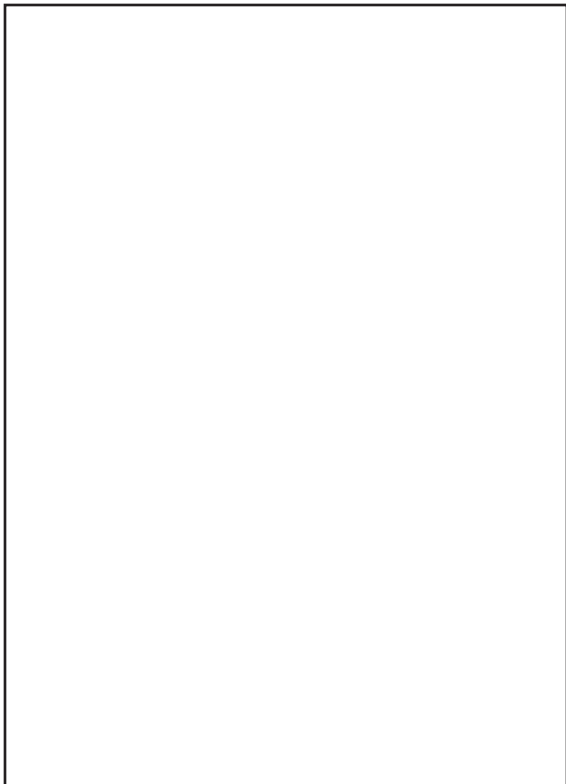
# Cone



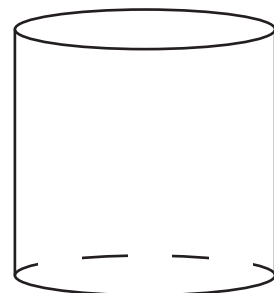
1. Cut out figure along solid lines.
2. Pull sides of the circle toward each other to form cone.
3. Glue or tape edges.
4. For a bottom, trace the base on paper. Add tabs.
5. Cut out your shape.
6. Bend in tabs and insert inside cone. Tape or glue shut



# Cylinder

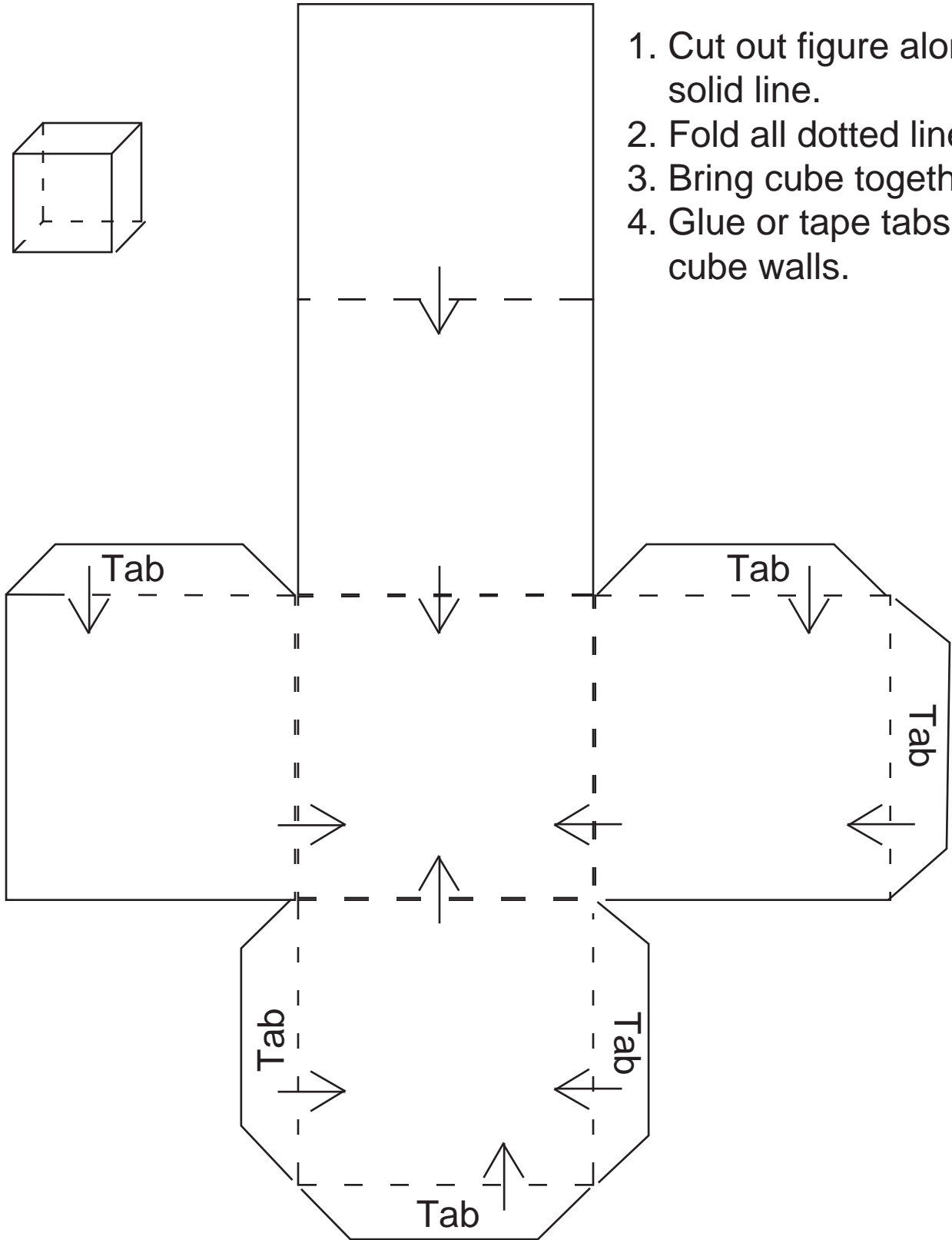
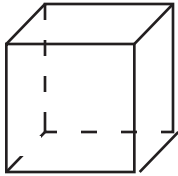


1. Cut out figure along solid lines.
2. Wrap the edges of the figure together.
3. Glue or tape edgestogether.
4. For a bottom, trace the base on paper. Add tabs.
5. Cut out your shape.
6. Bend in tabs and insert inside cylinder. Tape or glue shut



## Geometric Forms

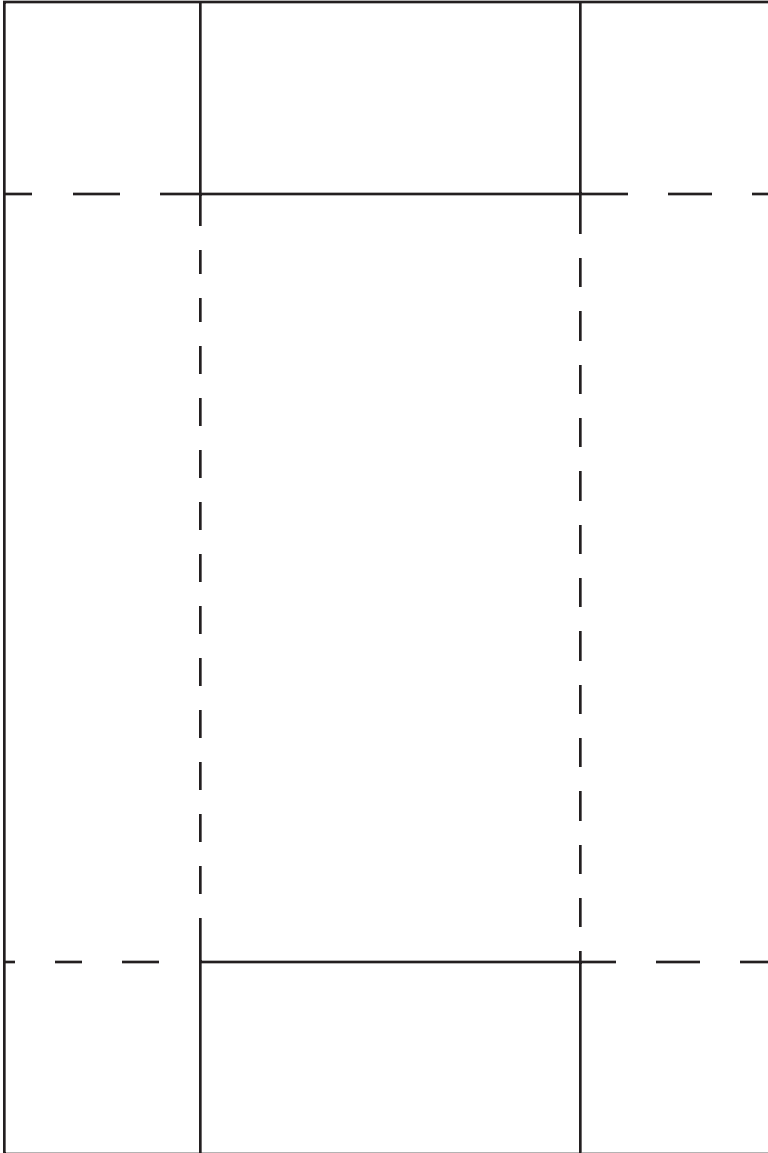
# Cube



1. Cut out figure along solid line.
2. Fold all dotted lines.
3. Bring cube together.
4. Glue or tape tabs to cube walls.

## Geometric Forms:

# Slab



1. Cut out the shape along the solid lines.
2. Fold all the dotted lines.
3. Bring the corners of the slab together.
4. Glue or tape inside corners of slab together.
5. For a bottom, trace the base on paper. Add tabs.
6. Cut out your shape.
7. Bend in tabs and insert inside pyramid. Tape or glue shut

